

RM12-33 (12V35AH)

Specification

Nominal Voltage	12V	
Nominal Capacity(20HR)	35.0AH	
Dimensions	Length	195±2mm (7.68 inches)
	Width	130±2mm (5.12 inches)
	Container Height	164±2mm (6.46 inches)
	Total Height (with Terminal)	178±2mm (7.01 inches)
Approx Weight	Approx 11.2 kg (24.7lbs)	
Terminal	T5	
Container Material	ABS	
Rated Capacity	35.0 AH/1.75A	(20hr , 1.80V/cell,25°C/77°F)
	32.6 AH/3.26A	(10hr, 1.80V/cell,25°C/77°F)
	29.8 AH/5.95A	(5hr, 1.75V/cell,25°C/77°F)
	26.8 AH/8.93A	(3hr, 1.75V/cell,25°C/77°F)
	22.0 AH/22.0A	(1hr, 1.60V/cell,25°C/77°F)
Max. Discharge Current	525A (5s)	
Internal Resistance	Approx 11mΩ	
Operating Temp.Range	Discharge	: -15~50°C (5~122°F)
	Charge	: 0~40°C (32~104°F)
	Storage	: -15~40°C (5~104°F)
Nominal Operating Temp. Range	25±3°C (77±5°F)	
Cycle Use	Initial Charging Current less than 10.5A.Voltage	
	14.4V~15.0V at 25°C(77°F)Temp. Coefficient -30mV/°C	
Standby Use	No limit on Initial Charging Current Voltage	
	13.5V~13.8V at 25°C(77°F)Temp. Coefficient -20mV/°C	
Capacity affected by Temperature	40°C (104°F)	103%
	25°C (77°F)	100%
	0°C (32°F)	86%
Self Discharge	Leoch LP series batteries may be stored for up to 6 months at 25°C(77°F) and then a freshening charge is required. For higher temperatures the time interval will be shorter.	



Applications

- ◆ All purpose
- ◆ Uninterruptable Power Supply (UPS)
- ◆ Electric Power System (EPS)
- ◆ Emergency backup power supply
- ◆ Emergency light
- ◆ Railway signal
- ◆ Aircraft signal
- ◆ Alarm and security system
- ◆ Electronic apparatus and equipment
- ◆ Communication power supply
- ◆ DC power supply
- ◆ Auto control system



Constant Current Discharge (Amperes) at 25 °C (77°F)

F.V/Time	5min	10min	15min	20min	30min	45min	1h	2h	3h	4h	5h	6h	8h	10h	20h
1.85V/cell	66.7	51.2	42.4	36.7	28.3	20.9	17.6	10.4	8.14	6.62	5.40	4.69	3.78	3.16	1.73
1.80V/cell	89.5	65.4	51.2	43.3	33.4	24.3	19.7	11.4	8.76	7.07	5.80	5.03	4.01	3.26	1.75
1.75V/cell	100.9	71.9	56.0	46.6	34.7	25.2	20.6	11.8	8.93	7.23	5.95	5.16	4.08	3.34	1.77
1.70V/cell	111.1	78.3	59.7	49.0	36.1	26.2	21.3	12.1	9.17	7.42	6.10	5.27	4.13	3.41	1.80
1.65V/cell	122.5	84.5	63.5	52.0	38.1	26.9	21.8	12.3	9.57	7.68	6.27	5.39	4.20	3.48	1.82
1.60V/cell	135.1	91.8	67.9	55.4	40.3	28.0	22.0	12.8	9.86	7.92	6.48	5.50	4.24	3.52	1.83

Constant Power Discharge (Watts/cell) at 25 °C (77°F)

F.V/Time	5min	10min	15min	20min	30min	45min	1h	2h	3h	4h	5h	6h	8h	10h	20h
1.85V/cell	121.9	94.5	79.1	69.1	54.0	40.1	34.0	20.2	15.9	12.9	10.6	9.21	7.46	6.25	3.43
1.80V/cell	161.8	119.4	94.3	80.5	62.8	46.3	37.8	21.9	17.0	13.7	11.3	9.84	7.89	6.43	3.46
1.75V/cell	178.6	129.1	101.7	85.8	64.6	47.6	39.4	22.6	17.2	14.0	11.6	10.1	8.01	6.60	3.49
1.70V/cell	191.2	137.5	107.1	89.4	66.9	49.3	40.5	23.2	17.7	14.4	11.8	10.3	8.11	6.72	3.55
1.65V/cell	207.9	147.0	113.0	94.3	70.0	50.1	41.1	23.4	18.4	14.8	12.1	10.5	8.22	6.85	3.60
1.60V/cell	224.0	156.0	118.9	99.4	73.4	51.9	41.3	24.2	18.8	15.2	12.5	10.7	8.28	6.91	3.61

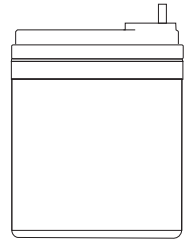
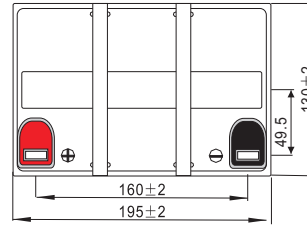
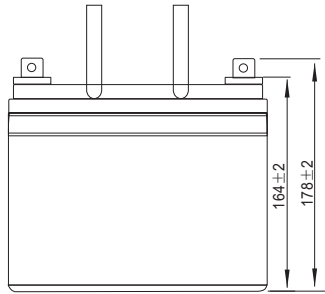
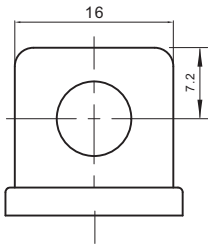
Specifications subject to change without notice.



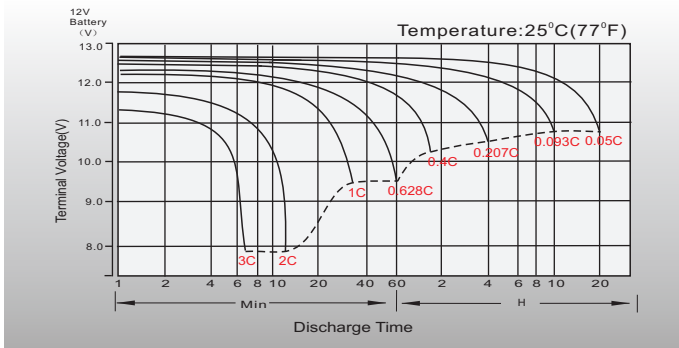
Dimensions

T5 Terminal

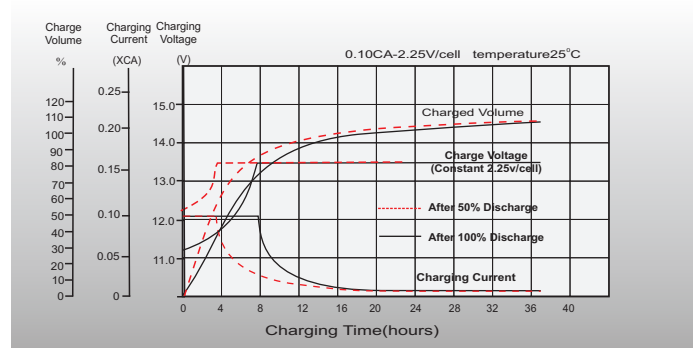
Unit: mm



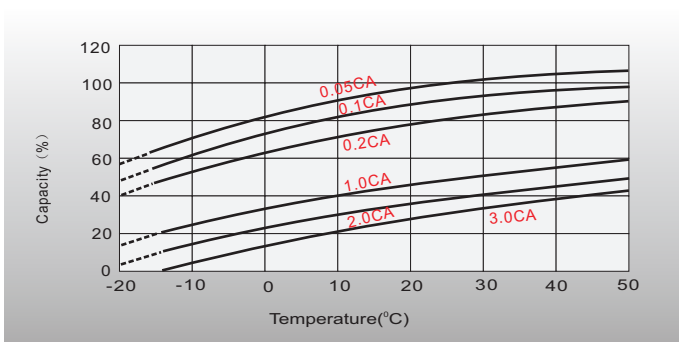
Discharge Characteristics



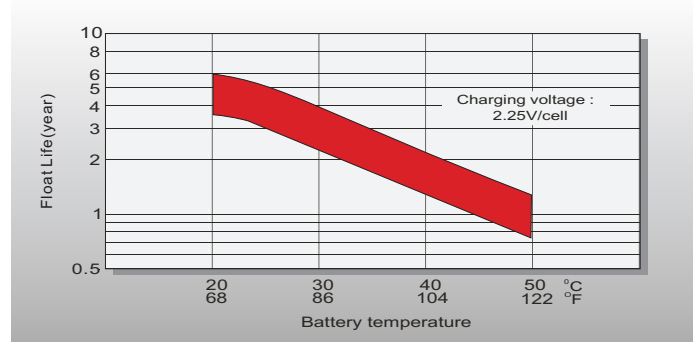
Float Charging Characteristics



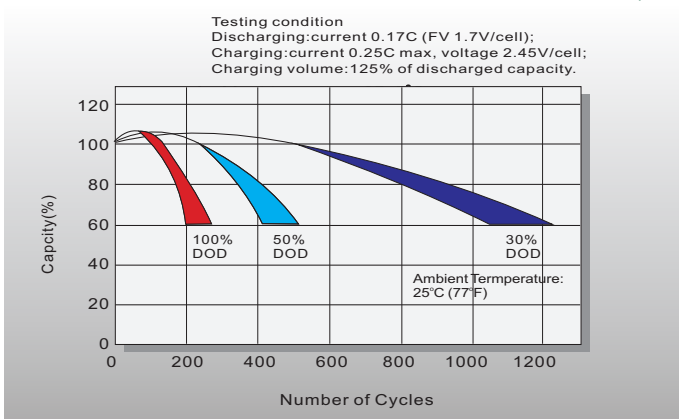
Temperature Effects in Relation to Battery Capacity



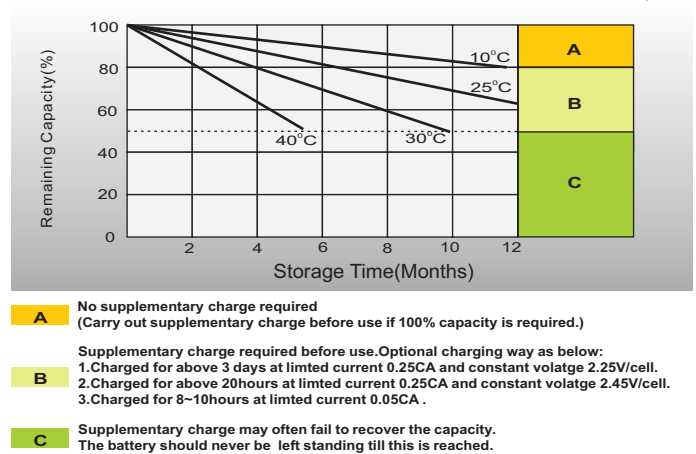
Effect of Temperature on Long Term Float Life



Cycle Life in Relation to Depth of Discharge



Self Discharge Characteristics



Sales Office

HC B Technologies Ltd

Auckland office:

Add: 2 Mahunga Drive, Mangere Bridge, Auckland 2022

Tel: +64-9-6220033

0800 422 228